

SUGGESTED ARTICULATIONS		
UPPER	LOWER	POSTERIOURS
ANTERIOURS	ANTERIOURS	28°/33°
S2	L2	30
S4	L4	30
S5	L7	32
S6	L9	34
S8	L8	34
T2	L2	30
T4	L4	30
T6	L6	32
T7	L7	32
T8	L8	34
T9	L11	34
T10	L10	36M
T12	L13	36M
3P	L11	34



**Natural Beauty**  
 Life-like blend of shade and translucency  
 33 popular moulds satisfy lab's needs  
 Familiar forms: Square, Tapering and Ovoid available  
 Popular shades: A1, A2, A3, A3.5, B1, B2, C2, D2

**High-performance Property**  
 Excellent shade stability  
 Low affinity to plaque

**Easy to Use**  
 Easy to set-up posteriors  
 No-wax carding, no need to wipe-off wax



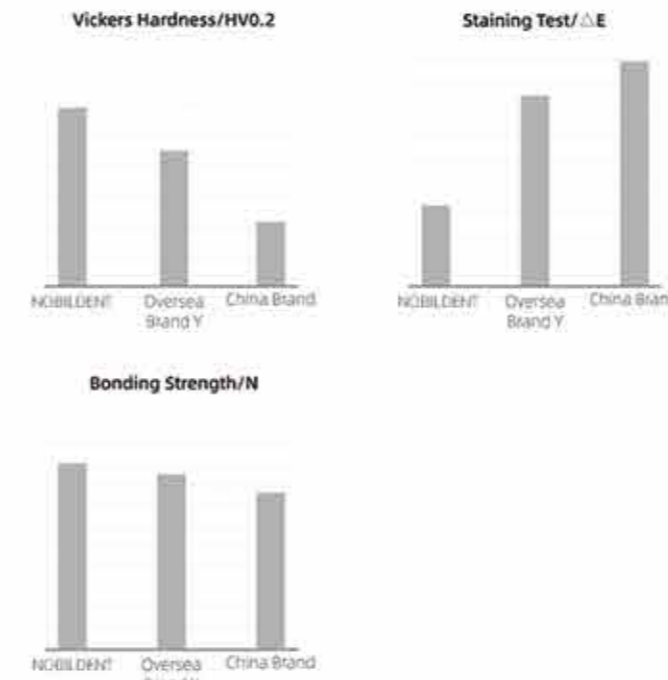
**High Quality Automated Production**



**Easy to Order**  
 Web order: [store.vincismile.com](http://store.vincismile.com)  
 App order: TEETH ASAP  
 Contact sales: per business card info  
 Email and Phone: [marketing@vincismile.com](mailto:marketing@vincismile.com), 626 283 5808



**Physical Property**



# NOBILDENT<sup>®</sup> Select XL

Let Your Smile Shine with NOBILDENT



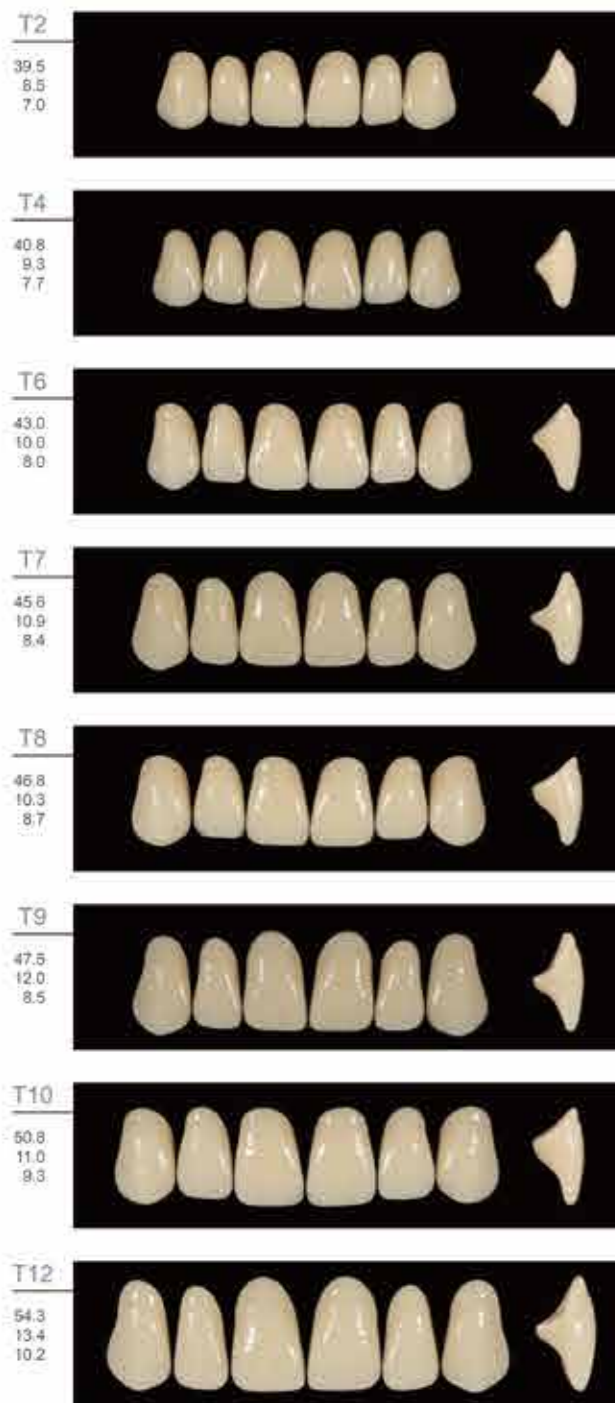
6x16/box  
 (6pcs/card, 16 cards/box)

8x12/box  
 (8pcs/card, 12 cards/box)

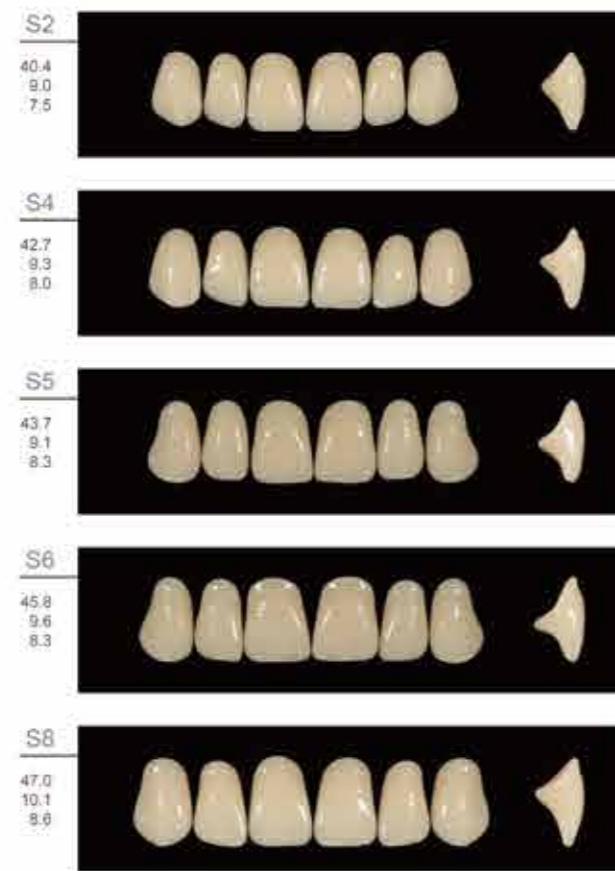
Same size, same color in the same box, ordering unit by box.



UPPER ANTERIOR TAPERING



UPPER ANTERIOR SQUARE



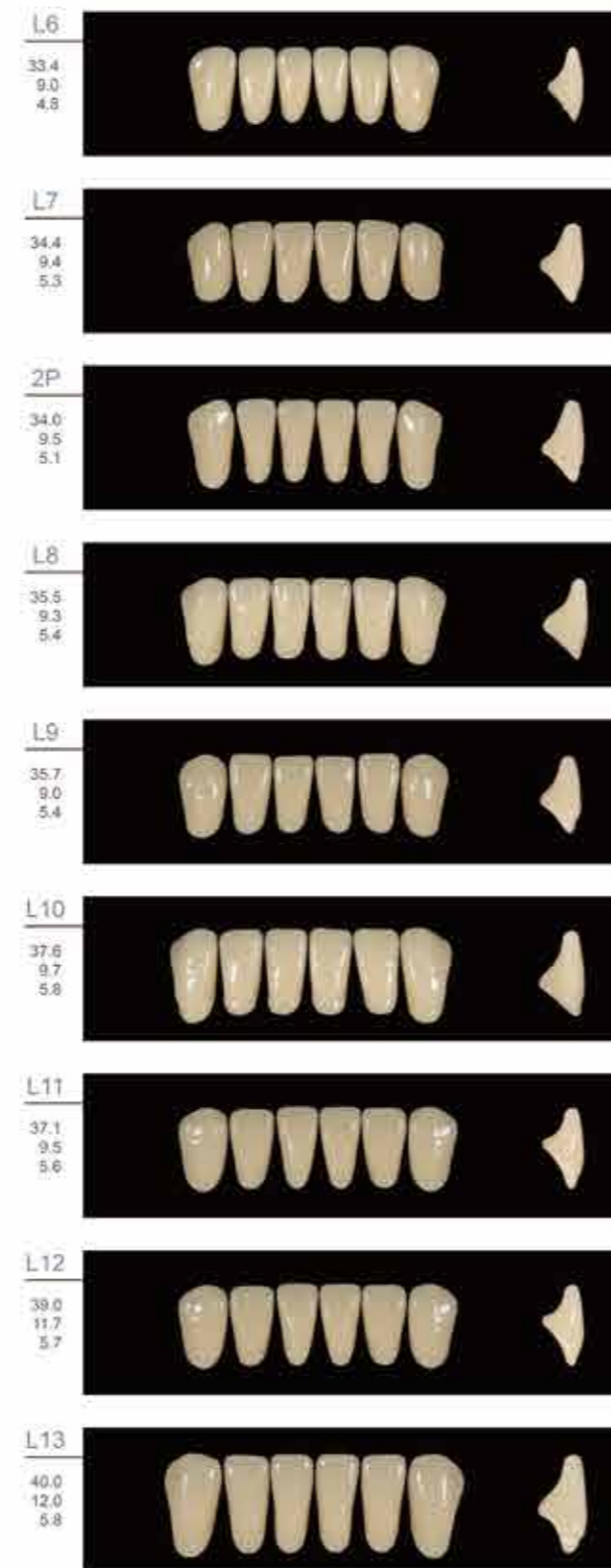
UPPER ANTERIOR OVOID



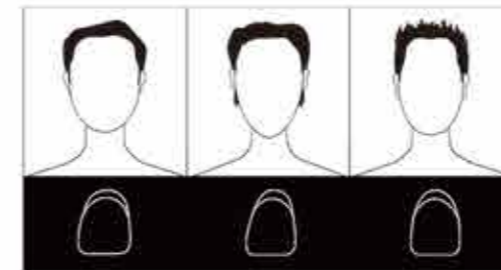
LOWER ANTERIORS



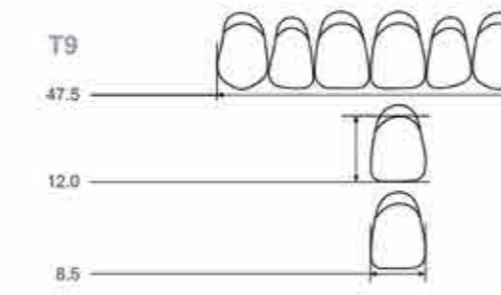
LOWER ANTERIORS



All measurements in millimeters

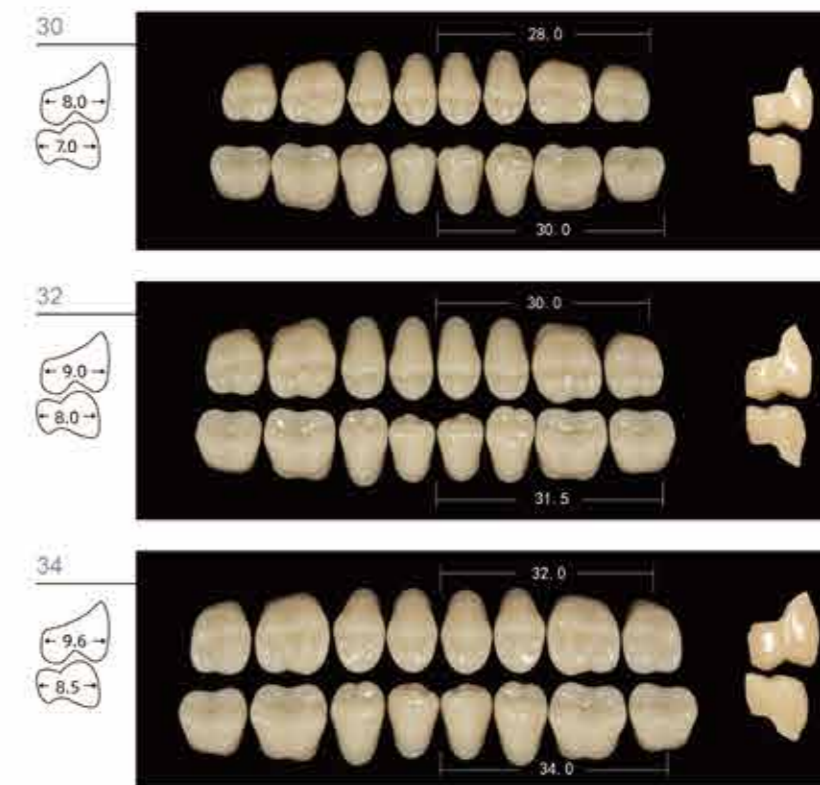


▲ SQUARE ■ TAPERING ● OVOID



Actual Size: All measurements in millimeters

POSTERIORS 28°



POSTERIORS 33°

